



Forward Thinking. High Achieving.

PAXSON ELEMENTARY SCHOOL

Our proposal addresses the critical need for additional classrooms and improved common spaces to accommodate overcapacity and anticipated continued growth.



A systemwide initiative to develop schools that work smarter for our students.

MEET YOUR SMART SCHOOLS TEAM

The Paxson Elementary School team worked intently through this process. We appreciate the input from students, parents, faculty, neighbors and the MCPS board. If you have questions or would like to get involved, we encourage you to visit www.mcpsmt.org/paxson or contact Principal Kelly Chumrau at klchumrau@mcps.k12.mt.us.

TEAM MEMBER CORE

Kelly Chumrau, Administration
Gwen Jones, Parent
Joe Perine, Grandparent
Gene Oliver, Counselor
Don Hensen, Custodian
Luke O'Connell, Student

TEAM MEMBER EXPANDED

Autumn Johnstone, Teacher
Rae Brown, Teacher
Sandy Finch, Classified
Dale Tallent, Business/Community
Ragna Thorne-Thomsen, Parent
Alex Upton, Student
Ethan Schroeder, Student

21ST CENTURY NEEDS

Paxson, an urban school built in 1991, serves over 450 students and our neighborhood student population is steadily increasing. Original flexible learning spaces (computer lab and art room) are now functioning as classrooms. Projections indicate additional classrooms and dynamic spaces are needed to meet the expanding neighborhood.

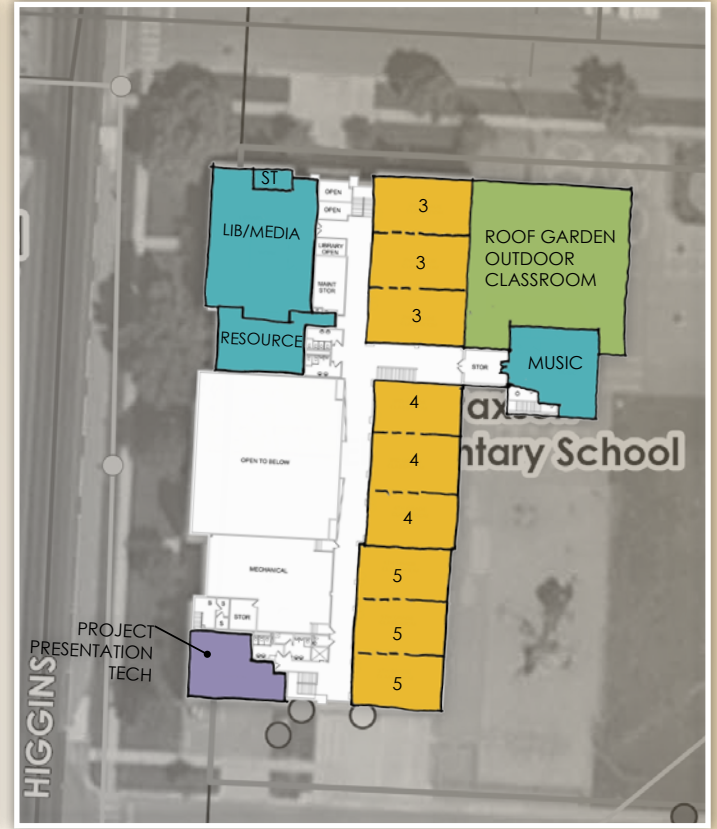
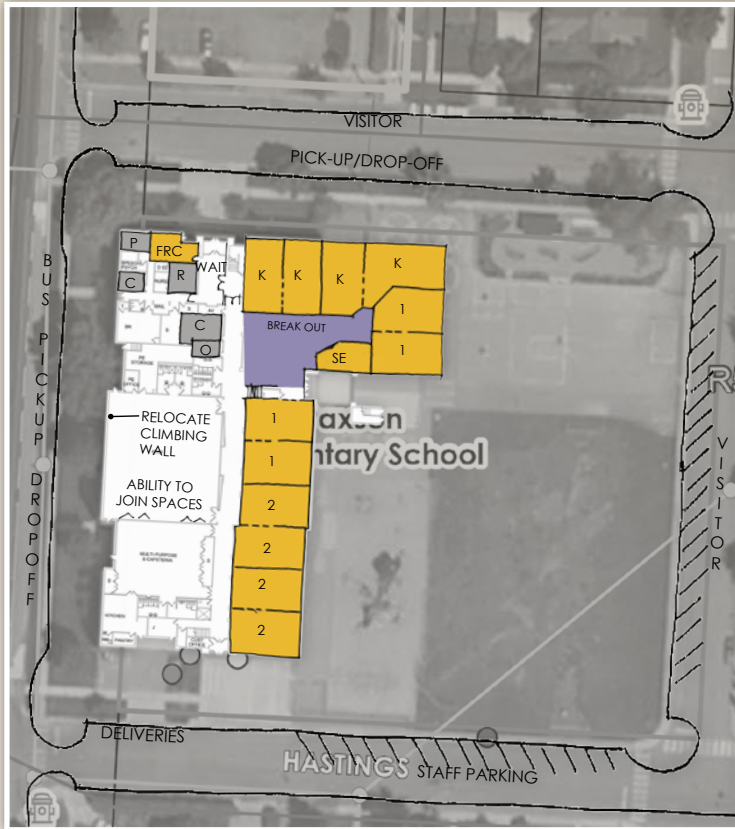
In order to address these key issues and provide our students with a 21st-century educational environment, Paxson plans to expand its classrooms and reconfigure common learning areas, including the library/media center and music room.

EXPANDING PAXSON ELEMENTARY SCHOOL

Our proposed option will provide additional classrooms, as well as transition hallway space providing an open corridor for both large and small flexible workspaces. Our proposal allows for increased collaboration with small groups and provides engaging spaces for large group activities. When complete, Paxson will be a smarter school in many ways, including:

- Expanded school to 24 classrooms.
- Superior collaboration spaces for students, teachers and parents.
- Entryway remodeled to create secure and safe front entrance.
- Hastings and Evans streets reconfigured as "Parking Streets."
- Acoustical treatment of gymnasium.
- Wireless Internet access for classes and staff.
- Safe child-friendly pickup area for students, parents, staff and guests.





OUR TEAM'S RECOMMENDED OPTION



OPTION E-2 EXPAND:

- Expand school to 24 classrooms.
- Remodel entry.
- Acoustical barn doors between lunchroom and gym.

- Acoustical treatment of gym.
- Reconfigure Hastings and Evans streets as "Parking Streets."

SECURITY

Modify facility to create obvious main entry, secure waiting area and ability to observe visitors approaching the building. Subdivide the building into secure zones with electronically activated door closers.

TECHNOLOGY

Develop high-speed/high-volume fiber optic distribution to breakout spaces for projects, presentations and technology in each learning community, enhanced with robust wireless and hard-wired access points.

ENVIRONMENT

Install barn doors and garage doors with quality acoustical materials between learning areas and breakout areas for projects, presentations and technology. Create small learning communities for teams of teachers and students that include traditional classrooms as well as important support spaces for 1:1 tutoring, small groups, planning centers, storage, etc.

FACILITIES STRATEGIC PLAN

Site Area: 2.12 acres

Parking spaces: None

Building Square Footage

Existing: 52,049

New: 4,500

Total Project Cost: \$2,184,718

Replacement Cost: \$12,700,000

Remaining Deferred Maintenance & Energy Project Costs: \$0

Rental / Lease / Sale Income: None

Current Enrollment: 421

Future Peak Enrollment: 490

Capacity: 450-500

Accessible Capacity: 450-500

Accessible / Permanent Capacity: 450-500

Costs include construction, demolition (where applicable), technology, furnishings, site development, design fees, and acquisition (where applicable). Contingency and escalation to January 2020.



NOW IS THE TIME TO INVEST IN SMARTER SCHOOLS

Education has never been more important than it is today. Our students face international competition for scholarships and jobs, and an increasing pace of change that impacts their futures. Yet, while the need for quality education continues to increase, our schools are physically in decline.

At Missoula County Public Schools, we realize that we must change if we're to keep up academically and economically as a community. That's why we launched Smart Schools 2020. Led by teams from each school, the initiative assesses needs by facility and prioritizes those needs in light of achieving our goals of a 21st Century Educational Culture and of being fiscally responsible.

By addressing schools now we prevent further deterioration of facilities, better prepare for population growth and ensure our students continue to get the educational opportunities they need to succeed in school and beyond.

THE SMART SCHOOLS PROCESS

SCHOOL CENTRIC:

Criteria and preferred options were established for each school by a team of teachers, administrators, students and parents from that school, along with members of the Missoula community.

COLLABORATIVE:

Alternatives were shared at public meetings at each school. In addition, surveys were sent out systemwide to vet priorities.

REALISTIC:

Team recommendations will be reviewed by the steering committee and the elected board of trustees before a bond measure is drafted.

PUBLIC:

Everyone is invited to review options and weigh in. Final support for the initiative will be determined by public election in November 2015.



To get involved, please visit www.mcpsmt.org/paxson or contact Principal Kelly Chumrau at klchumrau@mcps.k12.mt.us.